

**Protecting the Nantu Forest
A Biodiversity Stronghold in
Sulawesi, Indonesia**
A \$10 MILLION CAMPAIGN



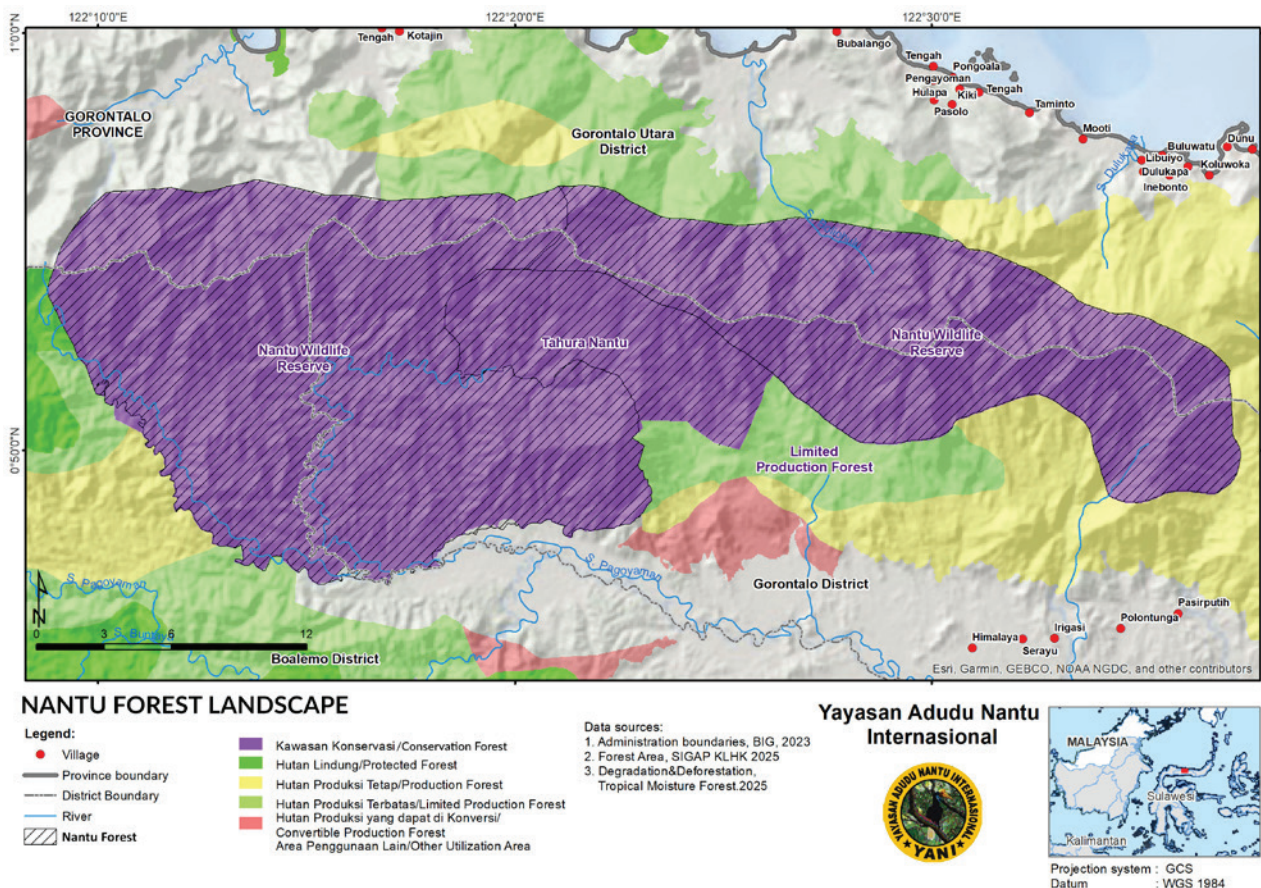
Join us in protecting a globally important ecosystem and one of Indonesia's last intact pristine rainforests. Covering over 144,000 acres, it is a unique sanctuary for species found nowhere else on Earth.
Dr. Lynn Clayton, scientist and founder of The Adudu-Nantu International Foundation (YANI)



*Huge Buttress Rooted Dracontomelum Dao tree
and YANI team*

THE NANTU FOREST – GLOBAL SIGNIFICANCE

The Nantu Forest is one of the last refuges on Earth for an extraordinary ecosystem found nowhere else but on Sulawesi, Indonesia's fourth largest island. Because Nantu's wild species exist only here, their survival depends entirely on this forest – if lost from Sulawesi, they disappear from the planet. Nantu protects some of the island's last remaining lowland rainforest, of which barely 1.5% still stands. Situated at the heart of the Wallacea bioregion – first described by explorer Alfred Russel Wallace in 1869 – Nantu remains one of its last intact examples, a living treasure of biodiversity that benefits both humanity and the Earth.



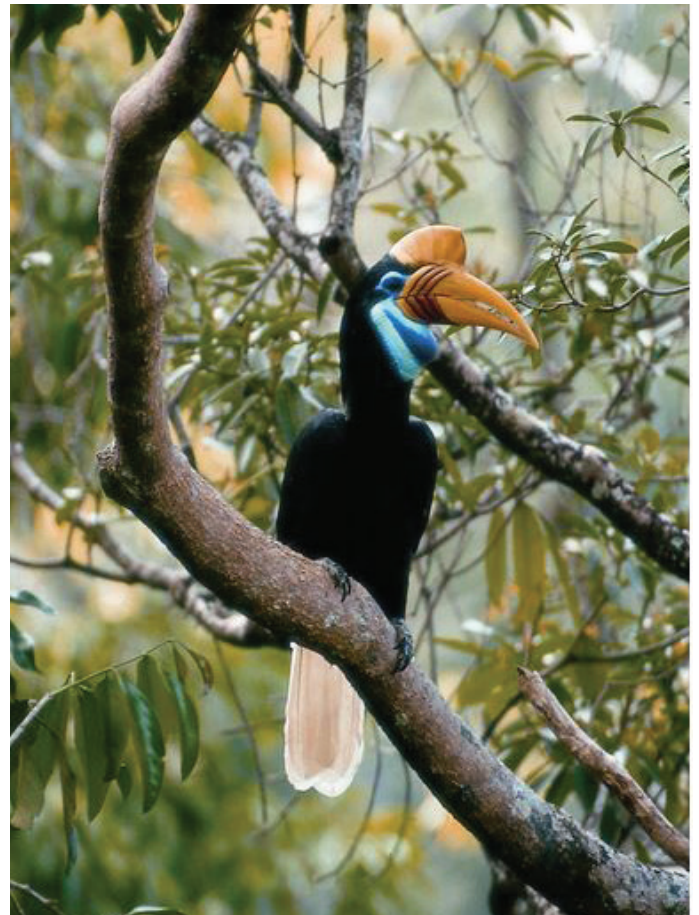
PROTECTING WILDLIFE, SUSTAINING PEOPLE

The Nantu Forest – 144,000 acres of rare, intact rainforest – is recognized as “one of the top five sites for biodiversity in Southeast Asia” for its extraordinary richness of unique species. Nantu is last critical habitat for unique and endangered species including Anoa (horned rainforest wild buffalo), Babirusas (curly-tusked pigs), Jatna's Tarsiers (tiny nocturnal primates), Heck's Macaques, the Tuwa Flying Frog and +100 species of birds including the Red-knobbed hornbill and Snoring Rail. Huge stands of rainbow barked *Eucalyptus deglupta* grace its riverbanks whilst pristine wild rattan stands, massive buttress rooted trees and a vast number of as yet poorly documented plant and animal species occur there.



The Paguyaman/Nantu water catchment is protected by the Nantu Forest, which lies in its upper reaches and from which thousands of small mountain streams drain down into the main river itself. Over 16,000 small farmers downstream depend on this river for crop irrigation, drinking water and household needs. With over 13 million tonnes of carbon stored in its trees and soil, the Nantu Forest contributes to the fight against global climate change while also regulating the local climate. This intact forest also provides both local and global citizens with clean air and protects them from drought, floods, erosion and extremes of temperature.

Outside the forest lie critical agricultural lands: these are totally reliant on its protective functions. Here subsistence farmers grow corn, rice and coconut, and farm cattle, chickens and goats, depending on the forest for its ecosystem services of air, water, carbon and healthy soil.



Red-Knobbed Hornbill



Rivers Flowing Down from Nantu's Boliyohuto Mountains Irrigate Agricultural Lands Downstream

PRESSING THREATS TO THE FOREST

Despite its global and local conservation importance, the Nantu Forest is gravely threatened:

- **Illegal gold-mining** power-sprays and excavators owned by outsiders destroy soil and vegetation, replacing steep forested hillsides with bare earth and vastly increasing sedimentation in rivers. Mercury is widely used in mining, poisoning water supplies and causing permanent damage to the health of local people.
- **Illegal logging** threatens Nantu's pristine and irreplaceable forest trees, with the recent establishment of a nearby pulp and paper mill in Eastern Borneo a further critical threat.
- **Poaching of Babirusa, Anoa:** These endangered species are hunted by poachers for their meat and are typically trapped in string leg-snares.
- **Palm Oil Plantation encroachment:** Land is sought for planting both palm oil and corn which causes pressure on the forested lands at Nantu.
- **Limited governance,** poor local law enforcement structures, use of natural resources for political capital and lack of empathy with biodiversity exacerbate all these threats.



Excavator Mining for Gold Immediately Outside Nantu Wildlife Sanctuary Reserve (11/01/2025)



Illegal Timber Cutting Encountered at Southern Nantu on 21/04/2025 by YANI Patrol Team

Without YANI's involvement, the consequences will be severe and irreversible: extinction of unique and little-known species found nowhere else on Earth, mercury poisoning and health risks for local communities, reduced water security and agricultural productivity downstream, and the loss of a critical store of forest carbon that helps buffer climate change.



OUR STRATEGY TO PROTECT NANTU

YANI is launching a two-year 10 million-dollar campaign to seize an urgent and critical opportunity to conserve the Nantu Forest before it is lost. Today, we are working to keep the Nantu Forest intact, but we also need to advance medium-term scientific research, species protection, and community outreach to ensure its huge value becomes more clearly evident to all who benefit from it and whose decisions have the power to influence its survival intact. All activities are implemented in close partnership with government and diverse local stakeholders.



Nantu Patrol

KEY CONSERVATION GOALS

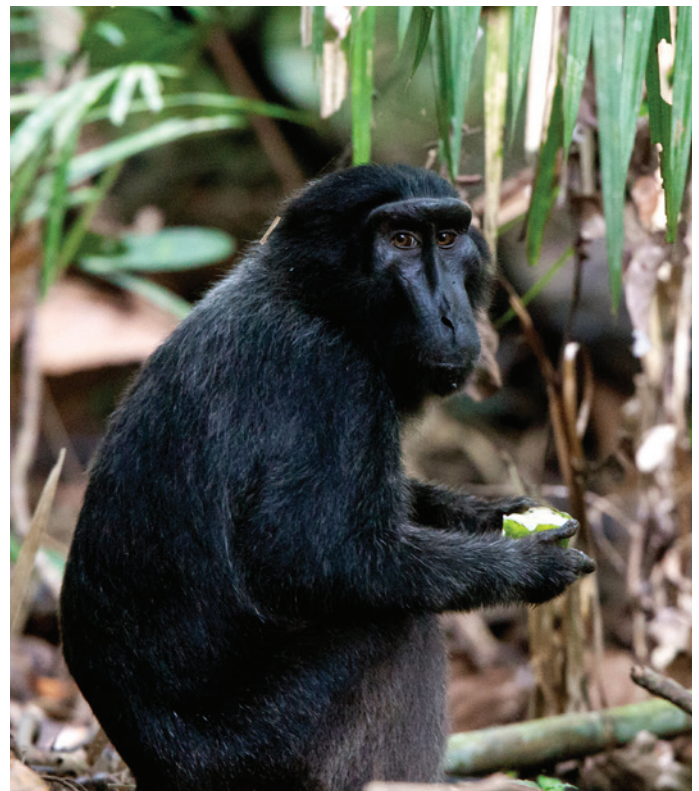
I) Preserve the Nantu Forest — prevent deforestation, pollution, and species extinction by maintaining round-the-clock ranger patrols that protect the forest from illegal activities.

II) Advance Rainforest Science and Discovery — by positioning Nantu as a regional center for biodiversity research and conservation knowledge.

III) Build Local Capacity for Conservation — by engaging teachers, students, and local leaders in hands-on field education and awareness.

IV) Support Sustainable Livelihoods in Buffer Zones — by helping communities develop income sources that reduce reliance on destructive forest practices.

V) Secure Long-Term Protection for Nantu — by creating sustainable financing mechanisms, including an endowment fund.



Heck's Macaque

WITH YOUR SUPPORT, WE CAN:

Hire Forest Protection Patrols

Our ranger patrols stationed 24/7 in the Nantu Forest are vital to its continued existence. They have a proven record, having been continuously operational 1999-2025, implementing daily and nightly patrols to protect the Nantu Forest Ecosystem from mining, slash-and-burn land clearance, illegal logging and wildlife poaching. As a direct result of their commitment Nantu currently remains 97% intact, in stark contrast to many other conservation areas in Sulawesi which have been severely degraded. A stronger financial future will enable YANI to attract and retain skilled staff who can increase knowledge of the forest and the value of its functions. Financial security will also enable us to provide appropriate support to them given the remote field conditions in which they work.



Patrol Team Nantu Forest

Expand Field Research

Our Goal is to advance scientific discovery in order to strengthen the case for conserving Nantu, as well as expanding Indonesia's rainforest research capacity and knowledge. Species on Nantu's mountain peaks are scarcely known to science. Your support will enable multiple scientific discovery expeditions by Indonesian scientists at Nantu, as well as short and medium-term research studies of Nantu's biodiversity, establishing Nantu as a regional centre of excellence for rainforest science.



National Scientists Conducting Botanical Research



Adudu Field Post, Nantu Forest

Build Awareness and Capacity for Conservation

Direct field experience is a key factor in building local support for conservation of Nantu. Teachers, school-children, scout groups, undergraduates and parliamentarians' eyes are opened by experiencing the Nantu Rainforest first-hand. We will implement residential field-learning events at our simple Nantu field stations, focused on practical outdoor learning through personal experience to build a cadre of local conservationists equipped to protect Nantu for the long-term.



Teachers' Workshop on YANI Curriculum Materials

Increase Bufferzone Community Development

Your support will enable income-generating activities to enhance the livelihoods of communities living immediately around the Nantu Forest boundary, hence reducing their dependence on destructive forest practices. Cattle, goat and chicken rearing, coconut, patchouli and sugar-palm production help reduce financial need for working as porters to illegal mines and as daily labourers burning forest.



Community Tree Nursery

Create a Sustainable Financial Future

We aim to build an endowment fund to secure the future of Nantu beyond our lifetime, ensuring activities can continue and protecting Nantu's long-term existence. This will be established alongside our annual fund, which seeks to ensure current forest-defending activities can continue day-to-day. We also seek to strengthen YANI's institutional capacity in order to face the challenges of the future.



PROTECTING NANTU STARTS WITH YANI

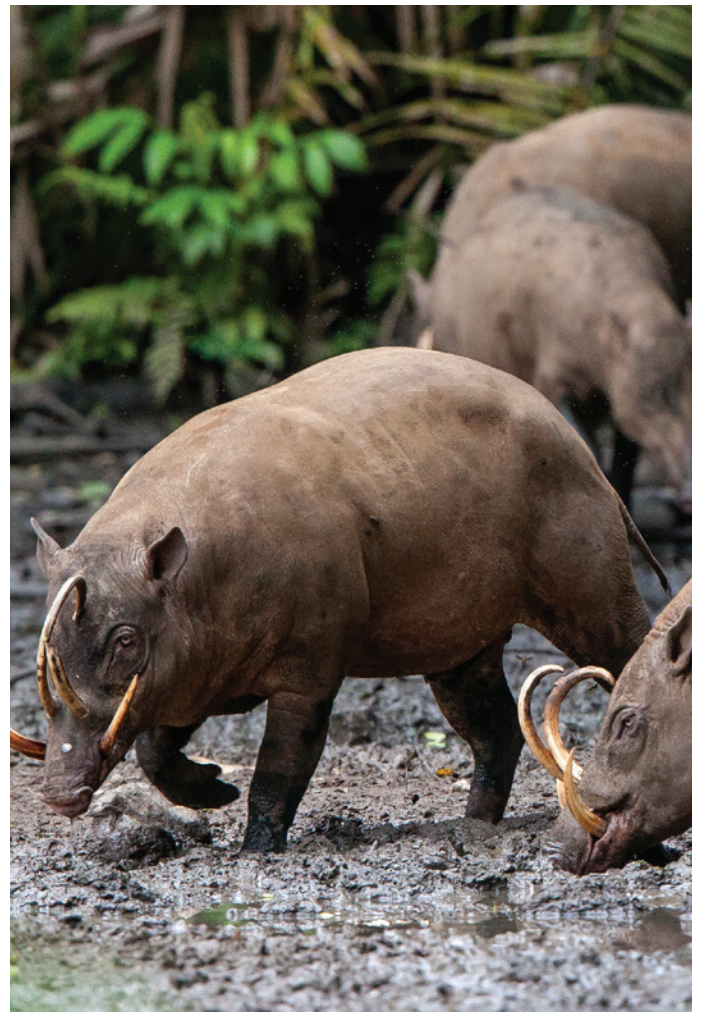
Since a young Oxford University researcher climbed into a longboat in Eastern Indonesia in 1989, the journey to conserve the Nantu Forest has been unfolding. Dr. Lynn Clayton has devoted her lifetime to the Nantu Forest and we now need you to join us on this journey. And here is why you should join us:

Proven Impact – With over 35 years of experience, YANI delivers high-impact, low-cost conservation. Our efforts have kept the Nantu Forest nearly intact while advancing scientific discovery.

Trusted by Communities and Government – We maintain deep, long-standing partnerships with local stakeholders and government bodies.

Uniquely Positioned for Success – No other organization has our level of continuity or depth of local understanding. Our team combines ecological expertise with cultural and institutional knowledge built through decades of embedded grassroots work.

Efficient and Transparent – YANI has a long-standing record of financial transparency and highly effective use of funds. We have been awarded three UK Government “Darwin Initiative” grants spanning nine years, alongside numerous other grants from trusted international funders including Rainforest Trust. Our board comprises local, national and international conservation professionals.



**JOIN US TO SAVE THIS UNIQUE
AND IRREPLACEABLE RAINFOREST
FROM DESTRUCTION TODAY AND
FOR THE FUTURE!**

For more information contact:
Dr. Lynn Clayton
clayton.lynn@gmail.com
www.nantuforest.org

